

AMENDING CHAPTER 51 "TRAFFIC", SCHEDULE S "SCHOOL SPEED LIMIT 20 MPH ON SCHOOL DAYS WHEN CHILDREN ARE PRESENT", OF THE CITY OF DEKALB, ILLINOIS MUNICIPAL CODE TO ESTABLISH A SCHOOL SPEED ZONE ALONG RIDGE DRIVE AND NORMAL ROAD (MITCHELL ELEMENTARY).

WHEREAS, the City of DeKalb (the "City") is a home rule unit of local government and may exercise any power and perform any function pertaining to its government and affairs pursuant to Article VII, Section 6, of the Illinois Constitution of 1970; and

WHEREAS, Chapter 51 of the City's Municipal Code (the "Code") regulates traffic in the City's corporate limits; and

WHEREAS, the City's corporate authorities find that it is in the City's best interest to amend Chapter 51 of the Code as provided by this Ordinance for the protection of the public health, safety, welfare and morals; and

NOW, THEREFORE, BE IT ORDAINED BY THE COUNCIL OF THE CITY OF DEKALB, ILLINOIS:

SECTION 1: The City's corporate authorities adopt and approve an amendment to Chapter 51, "Traffic", Schedule S, "School Speed Limit 20 MPH on School Days When Children are Present", of the Code as follows (additions are indicated by double underlining and deletions are indicated by ~~strike through~~ markings):

* * *

In accordance with Section 51.05.6, no person shall operate a motor vehicle in excess of 20 miles per hour during the times and at such places as indicated:

* * *

Normal Road from the South right-of-way line of Ridge Drive to a point 63 feet South of the South right-of-way line of Kimberly Drive

* * *

Ridge Drive from the East right-of-way line of Normal Road to a point 357 feet West of the West right-of-way line of Hanna Court

* * *

SECTION 2: This ordinance shall be the effective legislative act of a home rule municipality without regard to whether such ordinance should (a) contain terms contrary to the provisions of current or subsequent non-preemptive state law, or (b) legislate in a manner or regarding a matter not delegated to municipalities by state law. It is the intent of the City's corporate authorities that if this ordinance is inconsistent with any non-preemptive state law, this ordinance shall supersede state law in its jurisdiction.

SECTION 3: Except as may otherwise be amended by this ordinance, Chapter 51 of the Code shall remain in full force and effect.

SECTION 4: This ordinance shall be in full force and effect after its passage and approval as provided by law.

PASSED BY THE CITY COUNCIL of the City of DeKalb, Illinois at a Regular meeting thereof held on the 12th day of May 2025 and approved by me as Mayor on the same day. Passed on

First Reading by a 6-0-2 roll call vote. Aye: Larson, Smith, Carlson, Powell, Verbic, Barnes. Nay: None. Absent: Zasada, Walker. Second Reading waived by a 6-0-2 roll call vote. Aye: Larson, Smith, Carlson, Powell, Verbic, Barnes. Nay: None. Absent: Zasada, Walker.



A handwritten signature in black ink, appearing to read "Cohen Barnes", written over a horizontal line.

COHEN BARNES, Mayor

ATTEST:

A handwritten signature in black ink, appearing to read "Ruth A. Scott", written over a horizontal line.

Ruth A. Scott, Executive Assistant

CHAPTER 51 "TRAFFIC"

SCHEDULE S

"SCHOOL SPEED LIMIT 20 MPH ON SCHOOL DAYS WHEN CHILDREN ARE PRESENT"

MOST RECENT AMENDMENT February 10, 2025 (Ordinance 2025-006)

In accordance with Section 51.05.6, no person shall operate a motor vehicle in excess of 20 miles per hour during the times and at such places as indicated:

Culver Street from the easternmost edge of the east right-of-way line of South Fourth Street (Illinois State Route 23), to the western most edge of the west right-of-way line of South Seventh Street. (2011-053)

Cutler Drive from Sangamon Road to a point 770 feet west of the West right-of-way line of Sangamon Road. (2012-038)

Davy Street from 151 feet East of East right-of-way line N. Ninth Street to 125 feet West of West Right-of-way line Twelfth Street.

East Garden Street from 130 feet East of East right-of-way line South Eighth Street to 360 feet West of West right-of-way line South Tenth Street.

Glidden Avenue from 55 feet North of North right-of-way line West Milner Avenue to 55 feet South of South right-of-way line West Taylor Street.

Gurler Road from 300 feet west of the west right-of-way line of Corporate Drive to 200 feet west of the west right-of-way line of Southpointe Drive. (2013-042)

Hillcrest Drive from 400 feet West of West right-of-way line of Fox Hollow (east) to 400 feet east of the East Right-of-way line of Fox Hollow (east). (1999-065)

Normal Road from the South right-of-way line of Ridge Drive to a point 63 feet South of the South right-of-way line of Kimberly Drive

Ridge Drive from the East right-of-way line of Normal Road to a point 357 feet West of the West right-of-way line of Hanna Court

Oak Street from 154 feet west of the west right-of-way line of North Fifth Street to 200 feet east of the east right-of-way line of North Sixth Street. (2010-036)

Ridge Drive from 40 feet West of West right-of-way line Judy Lane to 135 feet East of East right-of-way line Mayflower Drive.

Sangamon Road, from 470 feet south of the South right-of-way line of Cutler Drive to 300 feet north of the North right of way line of Cutler Drive. (2001-021)

School Street from 30 feet West of West right-of-way line North Thirteenth Street to Eleventh Street.

East Sunset Place from 20 feet East of East right-of-way line South Second Street to 135 feet West of West right-of-way Il. Route 23.

South Pointe Drive from a point 150 feet south from the South right-of-way line of Gurler Road to a point 760 feet south of the South right-of-way line of Gurler Road. (2004-086)

Sycamore Road from a point 300 feet Northeasterly from the East right-of-way line of North First Street to a point 200 feet southwesterly from the West right-of-way of Illinois Route 23. (1995-067)

East Taylor Street from 65 feet East of East right-of-way line South Seventh Street to 30 feet West of West right-of-way line South Tenth Street.

East Taylor Street from 245 feet East of East right-of-way line South First Street to 195 feet East of East right-of-way line South Second Street.

East Taylor Street from 700 feet east of the East right-of-way line of South Fourth Street to South Seventh Street. (1998-043)

West Taylor Street from 540 feet East of East right-of-way line Sharon Drive to 150 feet East of East right-of-way line David Avenue.

West Taylor Street from 220 feet West of West right-of-way line Glidden Avenue to 225 feet East of East right-of-way line Glidden Avenue.

**** Number Streets ****

North First Street from a point 246 feet north of the North right-of-way line of Sycamore Road to a point 401 feet south of the South right-of-way line of Hillcrest Drive. (2005-083)

North First Street from 245 feet North of North right-of-way line Ridge Drive to 345 feet South of South right-of-way line Royal Drive.

South Second Street from 110 feet South of South right-of-way line East Alden Place to 135 feet South of South right-of-way line East Milner Avenue.

South Fourth Street (Illinois Route 23) to 165 feet North of North right-of-way line East Roosevelt Street to 115 feet South of South Right-of-way line East Prospect Street.

Along North Sixth Street between Pine and Oak Streets. (2013-041)

North Seventh Street from 175 feet North of North right-of-way line Lewis Street to 200 feet North of North right-of-way line Davy Street.

South Seventh Street from 90 feet south of the South right-of-way line of Culver Street to East Taylor Street. (1998-043)

South Seventh Street from 90 feet North of North right-of-way line East Roosevelt Street to 150 feet South of South right-of-way line Grove Street.

North Ninth Street from 175 feet North of North right-of-way line Lewis Street to 330 feet North of North right-of-way line Laura Place.

South Tenth Street from 185 feet North of North right-of-way line E. Taylor Street to 210 feet South of South right-of-way line East Prospect Street.

North Thirteenth Street from 20 feet North of North right-of-way line Prairie Avenue to 230 feet North of North right-of-way line Elmwood Avenue.

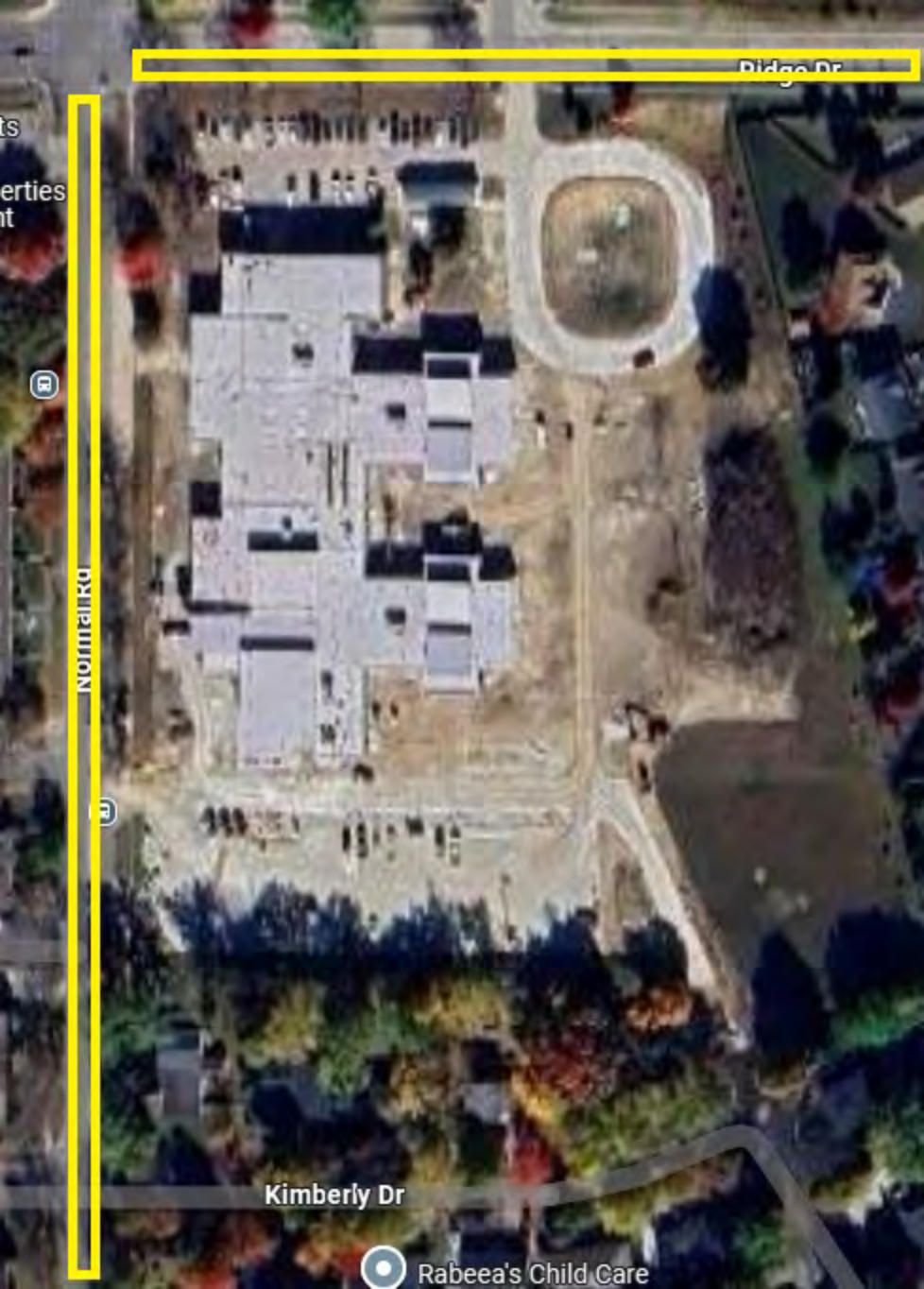
North Fourteenth Street from 75 feet North of North right-of-way line Lewis Street to 300 feet North of North right-of-way line Elmwood Avenue.

CHAPTER 51 - "TRAFFIC"
SCHEDULE S
"SCHOOL SPEED LIMIT 20 MPH ON SCHOOL DAYS WHEN CHILDREN ARE PRESENT"
TABLE OF AMENDMENTS

The following table provides for the amendments made to Schedule S of Chapter 51 since its original effective date of December 12, 1994, via Ordinance 1994-184.

Ordinance No.	Effective Date	Description of Amendment
1994-184	12/12/1994	Amending Chapter 51 "Traffic", Section 51.30 "Schedules", by Adding New Section R "School Speed Limit 20 MPH When Flashing" and Section S "School Speed Limit 20 MPH on School Days When Children Are Present".
1995-067	7/10/1995	Amending Chapter 51 "Traffic", Section 51.30 "Schedules", Schedule S "School Speed Limit 20 MPH on School Days When Children Are Present", as it Pertains to Sycamore Road.
1997-100	11/10/1997	Amending Chapter 51 "Traffic", Section 51.30 "Schedules", Schedule B "Through Streets, Stop Intersections and Yield Intersections" and Schedule S "School Speed Limit 20 MPH on School Days When Children Are Present", as it Pertains to Augusta Avenue, Linden Place, and S. First (1 st) Street.
1998-043	4/13/1998	Amending Chapter 51 "Traffic" by Adding Section 51.05-6 "School Speed Restrictions" and Amending Schedule S "School Speed Limit 20 MPH on School Days When Children Are Present", by Deleting Pine Street and Adding E. Taylor Street and S. Seventh (7 th) Street.
1999-065	6/28/1999	Amending Chapter 51 "Traffic", Section 51.05-6 "School Speed Restrictions" and Schedule S "School Speed Limit 20 MPH on School Days When Children Are Present", by Including Hillcrest Drive Near Fox Hollow.
2001-021	3/26/2001	Amending Chapter 51 "Traffic", Section 51.05-6 "School Speed Restriction" and Schedule S "School Speed Limit 20 MPH on School Days When Children Are Present", by Adding Sangamon Road.
2004-086	10/11/2004	Amending Chapter 51 "Traffic", Section 51.05-6 "School Speed Restrictions" and Schedule S "School Speed Limit 20 MPH on School Days When Children Are Present", by Adding South Pointe Drive.
2005-083	11/14/2005	Amending Chapter 51 "Traffic", Section 51.05-6 "School Speed Restrictions" and Schedule S "School Speed Limit 20 MPH on School Days When Children Are Present", by Including a Portion of N. First (1 st) Street Near Clinton Rosette Middle School.
2010-036	6/28/2010	Amending Chapter 51 "Traffic", Section 51.05-6 "School Speed Restrictions" and Schedule S "School Speed Limit 20 MPH on School Days When Children Are Present", by Including a Portion of Oak Street Between Fourth (4 th) Street and Seventh (7 th) Street.

Ordinance No.	Effective Date	Description of Amendment
2011-053	10/24/2011	Amending Chapter 51 "Traffic", Section 51.05-6 "School Speed Restrictions" and Schedule S "School Speed Limit 20 MPH on School Days When Children Are Present", by Adding a Portion of Culver Street Between the 400 Block and the 700 Block.
2012-038	5/14/2012	Amending Chapter 51 "Traffic", Section 51.05-6 "School Speed Restrictions" and Schedule S "School Speed Limit 20 MPH on School Days When Children Are Present", by Providing for a 20-MPH Speed Limit on Portion of Cutler Drive Between Wineberry Drive and Sangamon Road.
2013-041	6/10/2013	Amending Chapter 51 "Traffic", Section 51.05-6 "School Speed Restrictions" and Schedule S "School Speed Limit 20 MPH on School Days When Children Are Present", by Adding a Portion Along N. Sixth (6 th) Street Between Pine Street and Oak Street.
2013-042	6/10/2013	Amending Chapter 51 "Traffic", Section 51.05-6 "School Speed Restrictions" and Schedule S "School Speed Limit 20 MPH on School Days When Children Are Present", by Adding a Portion of Gurler Road Between Corporate Drive and Southpointe Drive.
2025-006	2/10/2025	Amending Chapter 51 "Traffic", Schedule S "School Speed Limit 20 MPH on School Days When Children are Present", to Establish a School Zone along McCormick Drive as it Approaches Jefferson Elementary.



Ridge Dr

Normal Rd

Kimberly Dr



Rabeea's Child Care