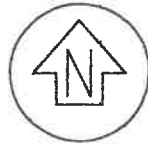


ALTA/ACSM LAND TITLE SURVEY

OF

LOT 67 OF BLOCK 11 OF THE COUNTY CLERK'S SUBDIVISION OF BLOCKS 11, 12, 13, AND 14 OF THE ORIGINAL VILLAGE (NOW CITY) OF DEKALB, ACCORDING TO THE PLAT THEREOF RECORDED IN BOOK "C" OF PLATS, PAGE 42, SITUATED IN DEKALB COUNTY, ILLINOIS.



SCALE: 1" = 20'

- ⊙ INDICATES MANHOLE
- ⊗ INDICATES LIGHTPOLE
- ⊕ INDICATES GAS VALVE
- ⊛ INDICATES POWERPOLE

TO:
 THE CHICAGO TITLE INSURANCE COMPANY,
 THE NATIONAL BANK & TRUST COMPANY
 OF SYCAMORE.

THIS IS TO CERTIFY THAT THIS MAP OR PLAT AND THE SURVEY ON WHICH IT IS BASED WERE MADE IN ACCORDANCE WITH "MINIMUM STANDARD DETAIL REQUIREMENTS FOR ALTA/ACSM LAND SURVEYS", AS ADOPTED BY ALTA/ACSM AND INCLUDES ITEMS 1, 7, 8, 10, OF TABLE "A" THEREOF.

DATED THIS 28th DAY OF May, 2002.

Edward A. Dienhart

EDWARD A. DIENHART, IPLS #035-003219

EDWARD A. DIENHART LAND SURVEYING
 203 PARKSUDE LANE, OSWEGO, IL 60543
 PHONE (630) 554-8270 FAX (630) 554-6157

SECOND STREET

(66 FOOT WIDE RIGHT OF WAY)
(ASPHALT PAVED)

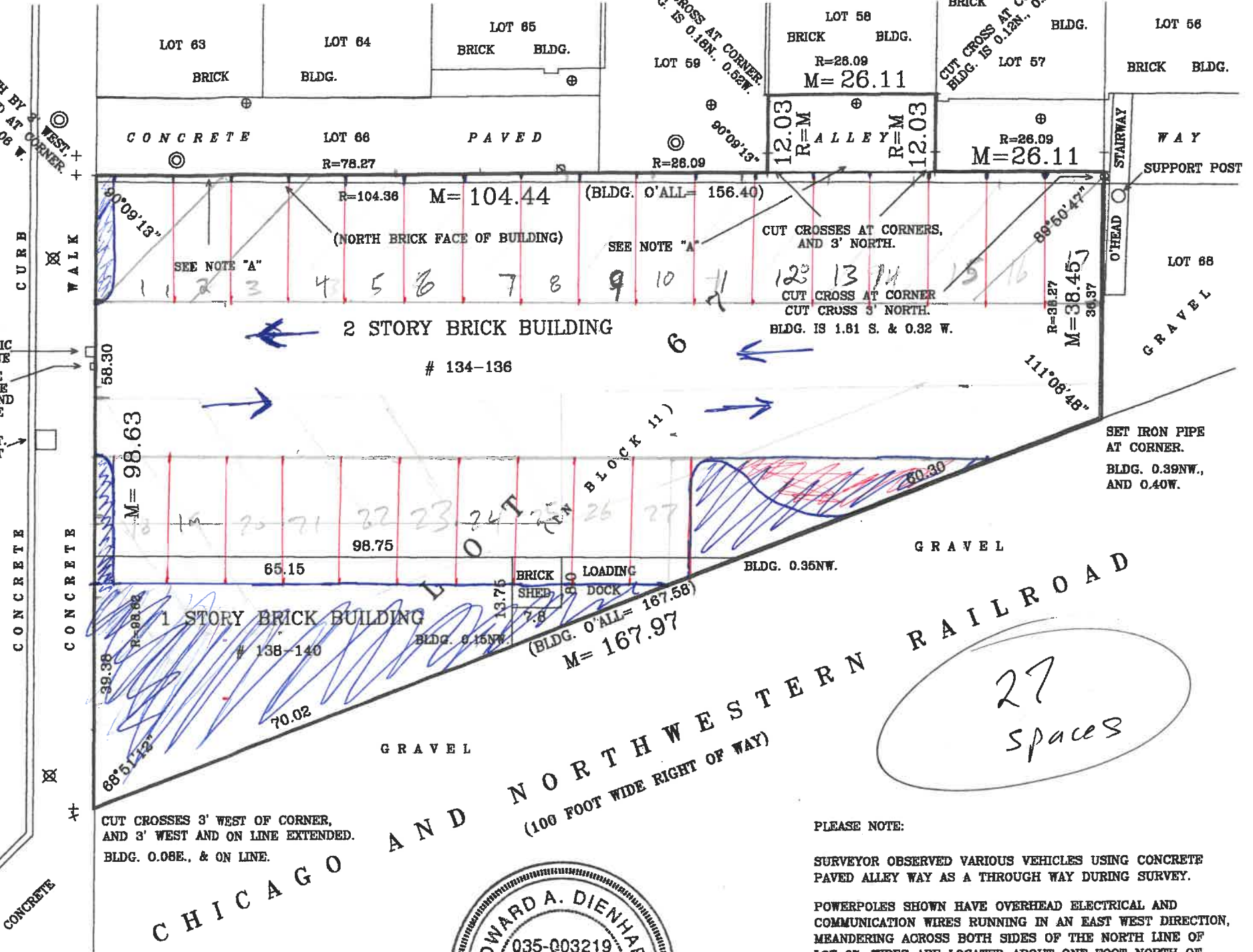
CONCRETE
WALK
CURB

CONCRETE
CONCRETE
CONCRETE

CUT CROSSES 3' NORTH BY 3' WEST AND ON LINE AND AT CORNER. BLDG. IS 1.00 S. & 0.06 W.

CUT CROSSES AT CORNER. BLDG. IS 0.12N., 0.25E.

CUT CROSSES AT CORNER. BLDG. IS 0.12N., 0.25E.



(BLDG. O'ALL= 156.40)

(NORTH BRICK FACE OF BUILDING)

CUT CROSSES AT CORNERS AND 3' NORTH.

CUT CROSS AT CORNER CUT CROSS 5' NORTH. BLDG. IS 1.81 S. & 0.32 W.

SET IRON PIPE AT CORNER. BLDG. 0.39NW., AND 0.40W.

CUT CROSSES 3' WEST OF CORNER, AND 3' WEST AND ON LINE EXTENDED. BLDG. 0.08E., & ON LINE.

CHICAGO AND NORTHWESTERN RAILROAD
 (100 FOOT WIDE RIGHT OF WAY)

NOTE "A"

PERMANENT EASEMENT FOR STORM SEWER FACILITIES PER DOCUMENT 8105031, AFFECTING THE NORTH 14.03 FEET OF LOT 67, EXCEPT THAT PORTION OCCUPIED BY THE EXISTING BUILDING.



LICENSE RENEWABLE NOV. 2002

PLEASE NOTE:

SURVEYOR OBSERVED VARIOUS VEHICLES USING CONCRETE PAVED ALLEY WAY AS A THROUGH WAY DURING SURVEY.

POWERPOLES SHOWN HAVE OVERHEAD ELECTRICAL AND COMMUNICATION WIRES RUNNING IN AN EAST WEST DIRECTION, MEANDERING ACROSS BOTH SIDES OF THE NORTH LINE OF LOT 67. WIRES ARE LOCATED ABOUT ONE FOOT NORTH OF AND PARALLEL WITH THE NORTH FACE OF THE BUILDING. WIRES NOT SHOWN TO MAINTAIN CLARITY OF THE DRAWING.

ALL DIMENSIONS ARE IN FEET AND DECIMALS THEREOF.

ANGLES SHOWN ARE MEASURED, NOT RECORDED.

DIMENSIONS OBTAINED BY SCALING ON THIS PLAT SHOULD BE CONSIDERED APPROXIMATE.